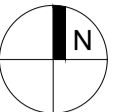


KEY PLAN



* LARGER TERRACES PROVIDED AT GROUND FLOOR

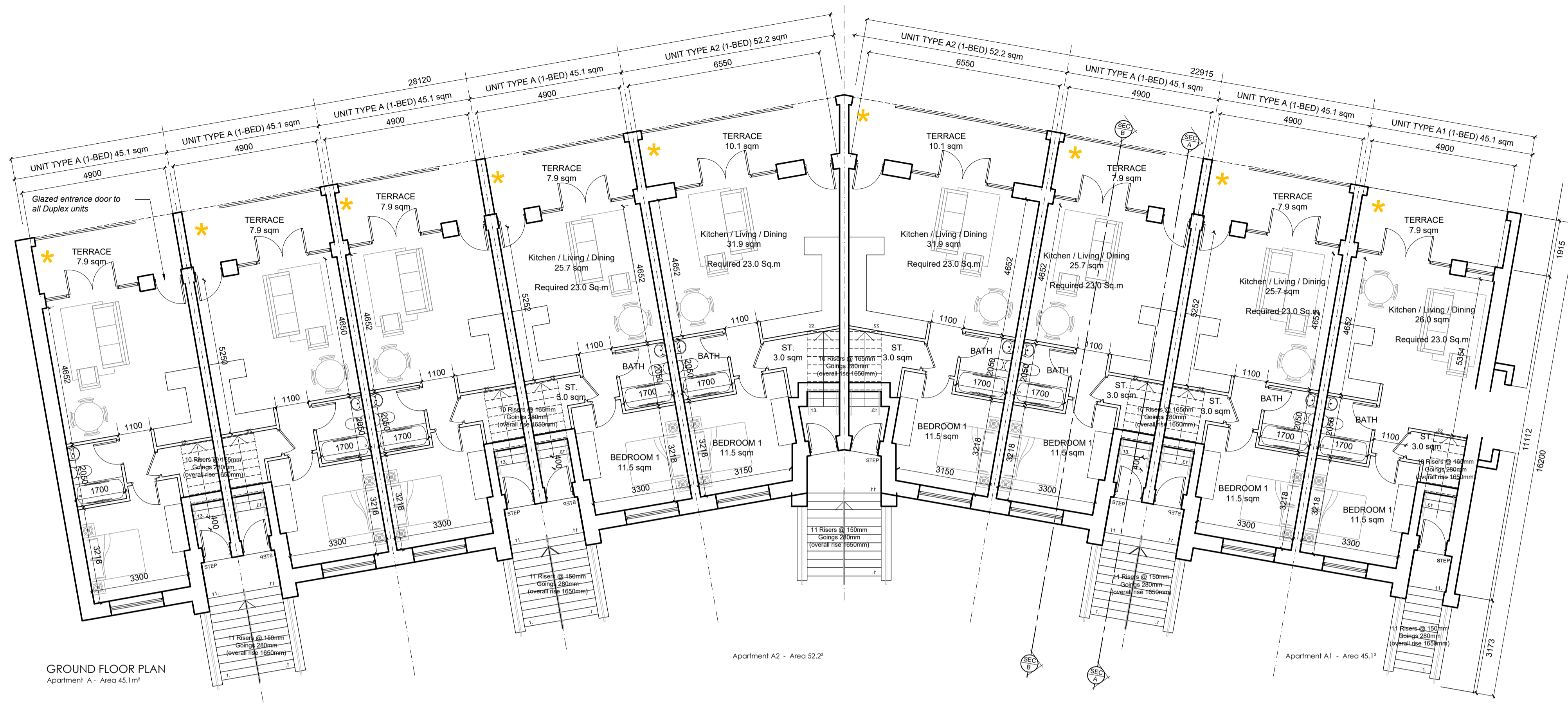
GENERAL NOTES

THIS DRAWING TO BE READ IN CONJUNCTION WITH ARCHITECT'S DRAWINGS, CONSULTANT ENGINEER'S DRAWINGS AND SPECIFICATIONS & LANDSCAPE ARCHITECT'S DRAWINGS
REFER TO ARCHITECT'S SITE PLAN PL102 FOR NORTH ORIENTATION.

LEVELS GIVEN ON HOUSE TYPE DRAWINGS ARE GIVEN TO A LOCAL ABSOLUTE ZERO LEVEL. FOR SPECIFIC LEVELS DEPENDING ON INDIVIDUAL UNIT LOCATION, REFER TO ARCHITECT'S CONTEXT SECTIONS AND ENGINEER'S DRAWINGS WHERE LEVELS ARE ALL GIVEN IN RELATION TO LAND SURVEYOR'S BENCHMARK BASED ON MALIN HEAD DATUM LEVEL.

NOTES ON FINISHES:

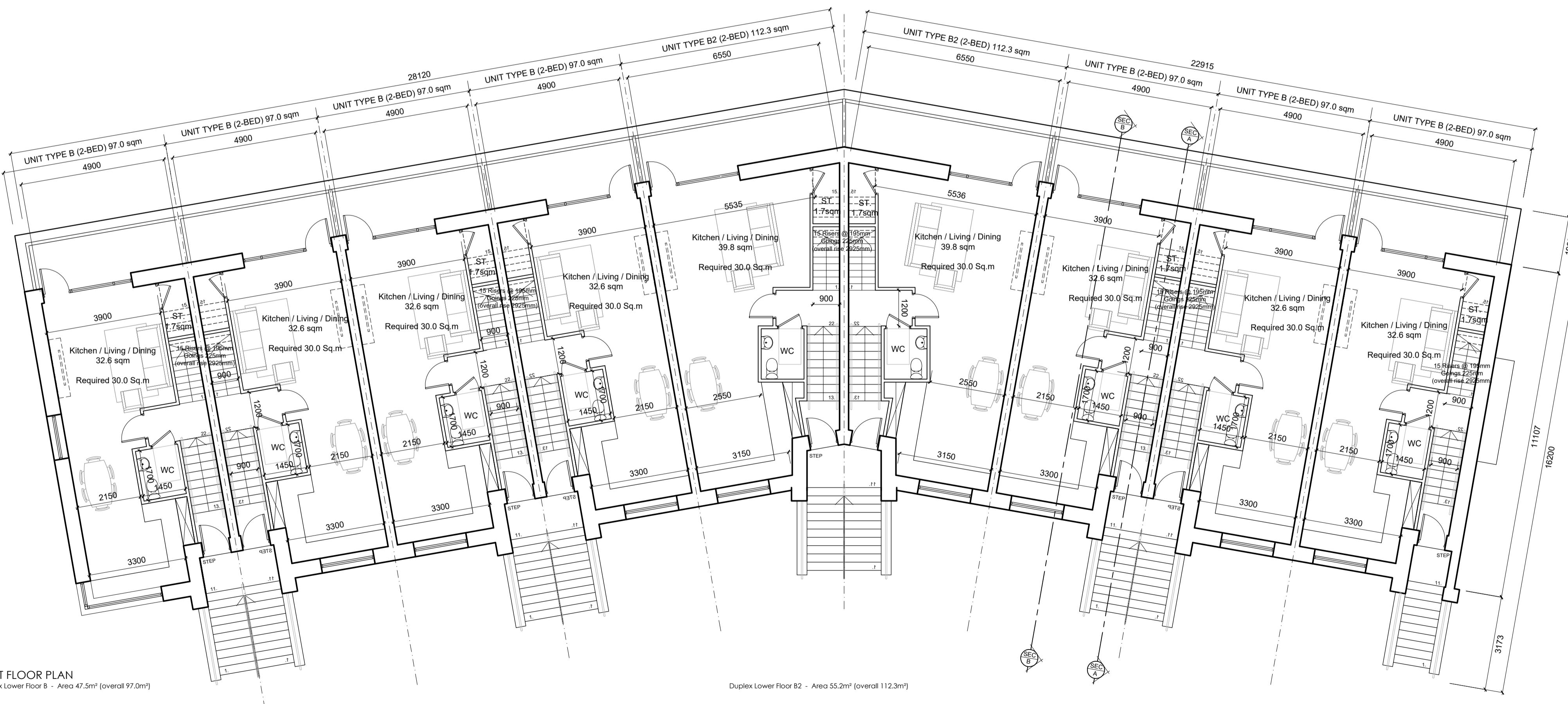
- ROOF: TO BE FINISHED IN SINGLE PLY ROOFING MEMBRANE OR SIMILARLY APPROVED
- WALLS: SELECTED BRICKWORK WHERE INDICATED OTHERWISE PAINTED SAND / CEMENT RENDER, SELF COLOURED RENDER OR METAL CLADDING, EXPRESSED BANDS AROUND EXTERNAL OPES/EXPRESSED LINTELS OVER EXTERNAL OPES WHERE INDICATED TO BE RECONSTITUTED STONE (LIGHT CREAM LIMESTONE OR GRANITE EFFECT) OR RENDER
- JOINERY: ALL WINDOWS AND DOORS, FRAMES AND LEAVES, TO BE ALUMINIUM POWDER-COATED TO APPROVED COLOUR, uPVC or SELECTED TIMBER. OBSCURE GLAZING WHERE INDICATED TO SENSITIVE WINDOWS.
- RAINWATER GOODS: GUTTERS, DOWNPIPES, AND FIXINGS TO BE uPVC OR ALUMINIUM POWDER COATED TO SELECTED COLOUR.
- BALCONIES: HANDRAILS AND BALUSTRADES TO BE MILD STEEL GALVANISED AND PAINTED TO SELECTED COLOUR.



GROUND FLOOR PLAN
Apartment A - Area 45.1m²

Apartment A2 - Area 52.2m²

Apartment A1 - Area 45.1m²



FIRST FLOOR PLAN
Duplex Lower Floor B - Area 47.5m² (overall 97.0m²)

Duplex Lower Floor B2 - Area 55.2m² (overall 112.3m²)

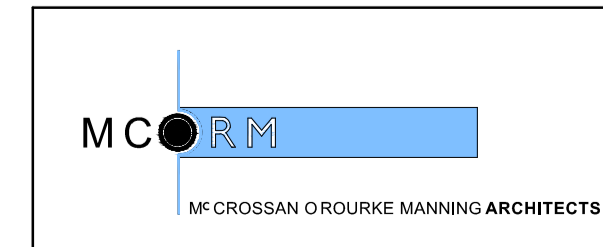
NOTES:
DO NOT SCALE FROM DRAWINGS. WORK TO FIGURED DIMENSIONS ONLY. ARCHITECT TO BE NOTIFIED OF ALL DISCREPANCIES.

A	1 STOREY 1 BED NO IN BLOCK:06	APARTMENT UNIT 45.1 SQM / 485 SQF
A1	1 STOREY 1 BED NO IN BLOCK:01	APARTMENT UNIT 45.1 SQM / 485 SQF

A2	1 STOREY 1 BED NO IN BLOCK:02	DUPLEX UNIT 52.2 SQM / 561 SQF
-----------	-------------------------------------	--------------------------------------

B	2 STOREY 2 BED NO IN BLOCK:07	DUPLEX UNIT 97.0 SQM / 1044 SQF
B2	2 STOREY 2 BED NO IN BLOCK:02	DUPLEX UNIT 112.3 SQM / 1208 SQF

REVISIONS		
DATE	DESCRIPTION	No.



PROJECT TITLE	DATE	DRAWN BY
Moygaddy Castle, Co.Meath	Aug '22	JC
DRAWING TITLE	SCALE	REVISION
Duplex Block F	1:100 @A1	-
Ground & First Floor Plans	JOB NO.	DRAWING NO.
1 Grantham Street, Dublin 8, Ireland D08 A49Y Tel: 01-4787670 Fax: 01-4787811 E-Mail: arch@morma.com	21006	PL320